



A new Toolkit for Post-Crash Response

Emma MacLennan, EASST



Development of a 'Post-Crash Response and Care Toolkit' for sharing among agencies



Post-crash response assessments in 4 countries

Kyrgyzstan, Tajikistan, Lebanon and Egypt

Common problems:

- Lack of coordination nationally
- Lack of coordination at the scene
- Poor communication
- Poor equipment base
- Regions not well served
- Inadequate training



What's in the Toolkit?

Key elements of effective Post-crash Emergency Response, covering:

- Reasons for taking action
- The main elements of Post-crash Response
- Examples of best practice
- Helpful resources



In **English, Arabic, Russian and Tajik**

Using the Toolkit – Key Stakeholder Meetings



Starting point for dialogue and discussion - identifying goals for improving post-crash services.

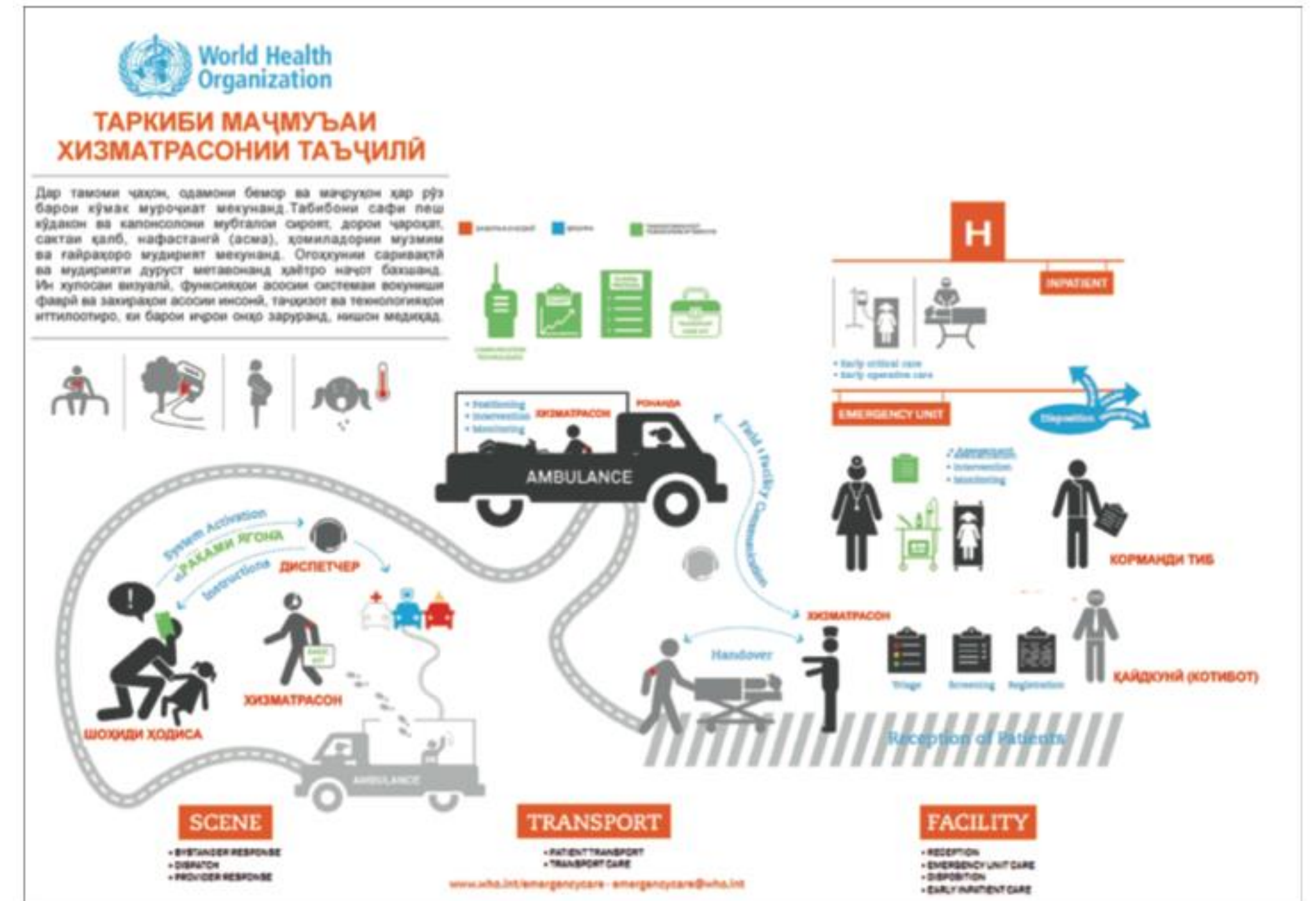
Resource for *joint planning* and stakeholder communication.

Effective Post-Crash Care

Effective emergency care is at the heart of post-crash response.

- It can make the difference between survival and death.
- Can prevent injuries becoming permanent and life changing.

It is a long-term process and involves multiple providers.



Тасвири 1: Ҷаҳорҷӯби ёрии таъҷилии Ташкилоти Умумиҷаҳонии Тандурустӣ

Reporting a Crash



Ittiloot.com



Infomigrants.net

Effective Dispatch



Манбаъ: Ассотсиатсияи Аврупоии Рақами ғавқулудда,
Тавсифи занҷири хидматрасонии зангҳои ғавқулудда

Intervention at the Scene



Crash Scene Management



Emergency Medical Care



Rehabilitation and Victim Support



Strategic Planning and Coordination



Resources

Animation links

СОМОҲАҶО

[WHO Emergency Care Programme](#)

[ERSO Post-impact care](#)

[WHO-ICRC Basic Emergency Care \(BEC\): Approach to the acutely ill and injured](#)

[WHO Post crash response: Supporting those affected by road traffic crashes](#)

[WHO Trauma Care Checklist](#)

[WHO Global Alliance for Care of the Injured](#)

[WHO Surgical Care Programme](#)

[WHO International Registry for Trauma and Emergency Care](#)

[WHO Guidelines for Essential Trauma Care, 2004](#)

ВОКУНИШИ ФАВҚУЛОДДА



МУОШИРАТИ ХУБ ВА ДИСПЕТЧЕРКУНОНӢ



ДАХОЛАТ ДАР МАҲАЛЛИ САДАМА



НИГОҲУБИНИ ҶАБРДИДАГОН



ҲАМОҲАНГСОЗӢ ВА ҶАМӢОВАРИИ
МАӢЛУМОТ



ТАҶҲИЗОТ ВА ОМУӢЗИШ





requiring special training and equipment. Trained and equipped personnel

Thank you!

emma@easst.co.uk